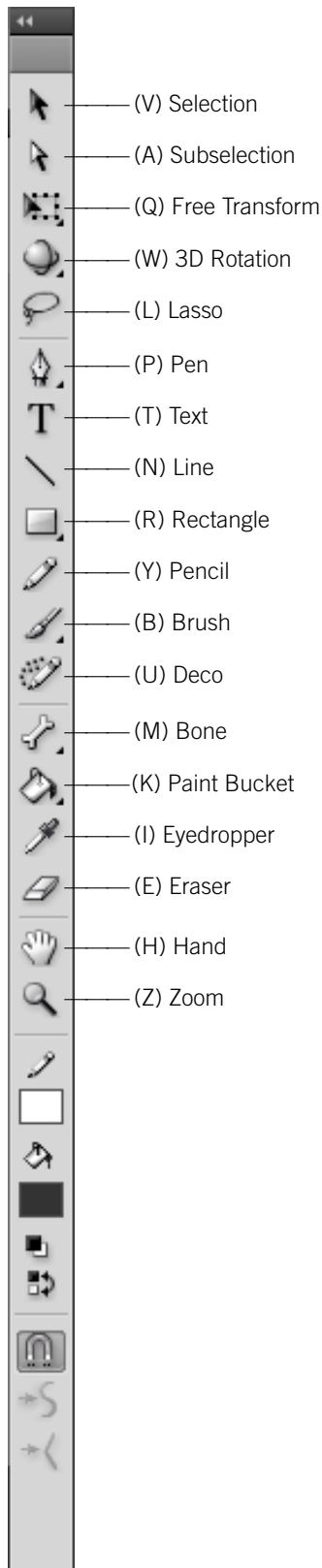




## TOOLS



## TIMELINE

- Insert Frame .....F5
- Delete Frame ..... Shift-F5
- Insert Keyframe.....F6
- Clear Keyframe ..... Shift-F6
- Insert Blank Keyframe.....F7
- Play ..... Return
- Rewind ..... Shift-Comma (,)
- Step Forward One Frame ..... Period (.)
- Step Backward One Frame..... Comma (,)

## SYMBOLS & SHAPES

- Convert to Symbol .....F8
- Create New Symbol.....Ctrl-F8
- Break Apart ..... Ctrl-B
- Group ..... Ctrl-G
- Ungroup ..... Ctrl-Shift-G
- Bring Forward ..... Ctrl-Up Arrow
- Bring to Front.....Ctrl-Shift-Up Arrow
- Send Backward..... Ctrl-Down Arrow
- Send to Back ..... Ctrl-Shift-Down Arrow
- Distribute to Layers .....Ctrl-Shift-D
- Paste in Place..... Ctrl-Shift-V
- Add Shape Hint ..... Ctrl-Shift-H
- Show Shape Hints..... Ctrl-Opt-H

## PANELS

- Actions .....F9
- Library ..... Ctrl-L
- Properties .....Ctrl-F3
- Align ..... Ctrl-K
- Transform .....Ctrl-T
- Color..... Alt-Shift-F9
- Document Properties ..... Ctrl-J
- Hide All Panels .....F4

## MISC.

- Test Movie .....Ctrl-Enter
- Bandwidth Profiler (while in Test Movie) ..... Ctrl-B
- Simulate Download (while in Test Movie) ....Ctrl-Enter
- Publish ..... Alt-Shift-F12
- Import to Stage ..... Ctrl-R

## NOBLE DESKTOP

<!--Exceptional computer graphics training.-->

594 Broadway, Suite 1202, New York, NY 10012  
212.226.4149 [www.nobledesktop.com](http://www.nobledesktop.com)