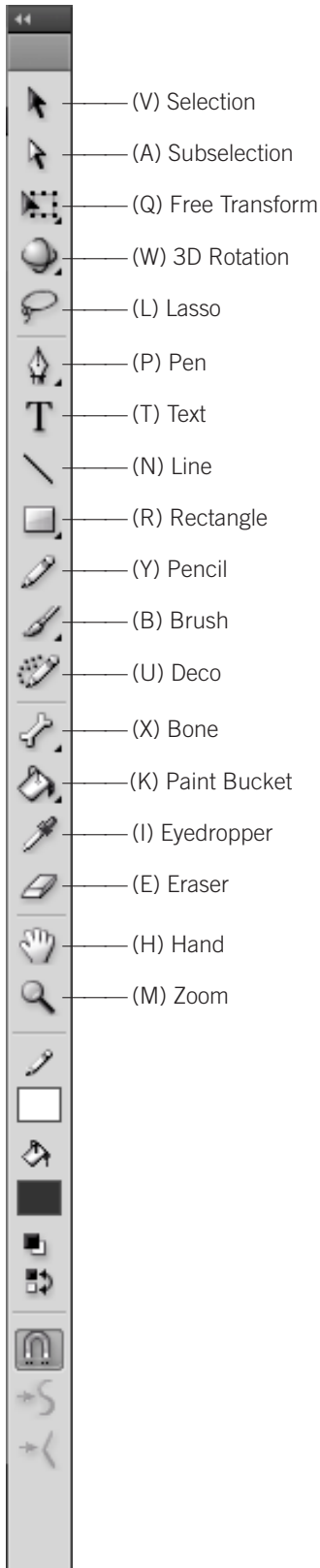




## TOOLS



## TIMELINE

- Insert Frame .....F5
- Delete Frame ..... Shift-F5
- Insert Keyframe.....F6
- Clear Keyframe ..... Shift-F6
- Insert Blank Keyframe.....F7
- Play ..... Return
- Rewind ..... Shift-Comma (,)
- Step Forward One Frame ..... Period (.)
- Step Backward One Frame..... Comma (,)

## SYMBOLS & SHAPES

- Convert to Symbol .....F8
- Create New Symbol..... ⌘-F8
- Break Apart ..... ⌘-B
- Group ..... ⌘-G
- Ungroup ..... ⌘-Shift-G
- Bring Forward..... ⌘-Up Arrow
- Bring to Front..... Opt-Shift-Up Arrow
- Send Backward..... ⌘-Down Arrow
- Send to Back ..... Opt-Shift-Down Arrow
- Distribute to Layers ..... ⌘-Shift-D
- Paste in Place..... ⌘-Shift-V
- Add Shape Hint ..... ⌘-Shift-H
- Show Shape Hints..... ⌘-Opt-H

## PANELS

- Actions ..... Opt-F9
- Library ..... ⌘-L
- Properties ..... ⌘-F3
- Align ..... ⌘-K
- Transform ..... ⌘-T
- Color..... Shift-F9
- Document Properties ..... ⌘-J
- Hide All Panels ..... F4

## MISC.

- Test Movie ..... ⌘-Return
- Bandwidth Profiler (while in Test Movie) ..... ⌘-B
- Simulate Download (while in Test Movie) .... ⌘-Return
- Publish ..... Shift-F12
- Import to Stage ..... ⌘-R

## NOBLE DESKTOP

<!--Exceptional computer graphics training.-->

594 Broadway, Suite 1202, New York, NY 10012  
212.226.4149 [www.nobledesktop.com](http://www.nobledesktop.com)